



DDL-8000A Series

Direct-drive, High-speed, 1-needle, Lockstitch Machine with Automatic Thread Trimmer

SIMPLY
smart solution
Good Value Models with JUKI Quality
and Friendly to Operators



DDL-8000A-MMS

SPECIFICATIONS

Model name	DDL-8000AS-IMS	DDL-8000AS-SH	DDL-8000AB-IMS	DDL-8000AB-SH
Specification	Standard type	Standard type	Shorter-thread remaining type	Shorter-thread remaining type
Application	Medium-weight	Heavy-weight	Medium-weight	Heavy-weight
Lubrication	Semi-dry	Minute-quantity lubrication	Semi-dry	Minute-quantity lubrication
Max. sewing speed	5,000st/min*	4,500st/min*	5,000st/min*	4,500st/min*
Max. stitch length	5mm			
Lift of the presser foot	By hand: 5.5mm, Auto: 1st stage 8.5mm, 2nd stage 13mm, By knee: 15mm			
Voice guidance	with voice guide			
Lubricating oil	JUKI Machine Oil 7 (equivalent to ISO VG7)			
Needle	DB×1 (#11) #9-18 (134Nm5-110)	DB×1 (#21) #20-23 (134Nm125-160)	DB×1 (#11) #9-18 (134Nm5-110)	DB×1 (#21) #20-23 (134Nm125-160)
Power consumption	330VA			

*st/min is the abbreviation for "stitches per minute"

WHEN YOU PLACE ORDERS

Please note when placing orders, that the model name should be written as follows:

Machine head & Control box

Machine head	Code	Lubrication	Application	Code
Standard type	S	Semi-dry head type	Medium-weight	MS
Shorter-thread remaining type	B	Minute-quantity lubrication type	Heavy-weight	SH

DDL8000A

Nipper and one-touch type reverse feed	Code	Automatic foot lifter	Code	Power supply	Code
Nipper	one-touch type reverse feed	Provided	AK	3 phase 200-240V	E
Not Provided	QB	Not Provided		Single-phase 200-240V	K
Provided	NB			Single-phase 200-240V (CE)	N

Simple Series Line Up



LK-1900S



LK-1903S



LBH-1790S

JUKI ECO PRODUCTS



The DDL-8000A is an eco-friendly product which complies with JUKI ECO PRODUCTS standards by protecting the environment.

- The sewing machine complies with the "Juki Group Green Procurement Guidelines" on the use of hazardous substances, which is stricter than other restrictions, such as those of the RoHS Directive.

For details of JUKI ECO PRODUCTS, refer to: <https://www.juki.co.jp/en/company/eco>

*The Juki Device is an EU Declaration in the use of hazardous substances (lead, hexavalent chromium, mercury, cadmium, Pb, Cd, Hg, Cr(VI)) in electrical and electronic equipment.

*The Juki Green Procurement Standard is the industry standard from an environmental perspective for procurement of substances. The standard covers which substances are used and how they affect the environment.



Required Operator: JUKI CORPORATION (Major Client)
 Recommended design, sales, distribution, and maintenance
 partners and training centers are: including sales and
 maintenance service of other JUKI products.

Direct-drive, High-speed, 1-needle, Lockstitch Machine with Automatic Thread Trimmer

DDL-8000A Series

JUKI CORPORATION
 2-1-1, TSUBUMAKI, TAMA-SHI,
 TOKYO 206-8551, JAPAN
 PHONE : (81) 42-357-2370
 FAX : (81) 42-357-2274
 https://www.juki.co.jp/en

SEWING MACHINERY & SYSTEMS BUSINESS UNIT
 * Specifications and appearance are subject to change without prior notice for improvement.
 * Read the instruction manual before pulling the machine into service to ensure safety.
 * This catalogue prints with environment-friendly soyink on recycle paper.
 * Paper from responsible sources FSC® C0011712

DDL-8000A Series

Direct-drive, High-speed, 1-needle, Lockstitch Machine with Automatic Thread Trimmer

The DDL-8000A Series maintains JUKI's established seam quality and is provided with narrowed-down essential and simplified functions. It helps improve the work efficiency through operator assistance with its audio guidance.



The DDL-8000A Series of sewing machines use two different lubricating methods.

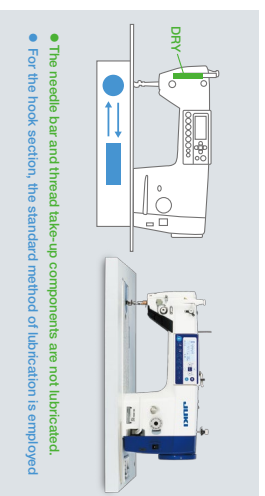
Lubrication in the frame is the main cause of oil stains on the products. The DDL-8000A Series [M] type has incorporated the semi-dry head with the frame which does not need lubrication. In addition, the DDL-8000A Series [S] type has adopted the minute-quantity lubrication system. Both come in two type: the standard type and the shorter-thread remaining type. The DDL-8000A Series of sewing machines are friendly to environments.

M Semi-dry head type **DDL-8000A-MS**

Max. sewing speed: 5,000st/min

Sewing work free from oil stains by means of our leading-edge dry-head technology.

With the advanced dry technology of enabling operation without being lubricated, a frame which does not need lubrication has been developed. It is provided with not only a high-speed sewing capability, but also a safety feature for preventing oil stains.

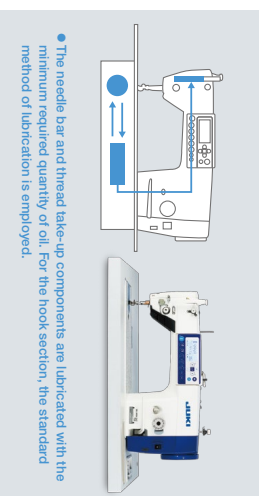


S Minute-quantity lubrication type **DDL-8000A-SH**

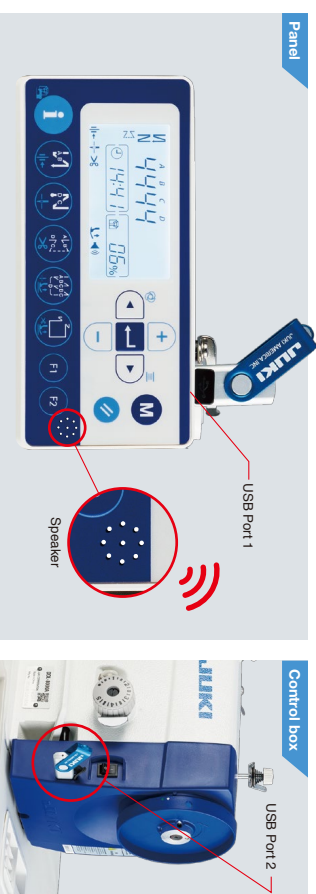
Max. sewing speed: 4,500st/min

The machine contributes to production improvement.

The DDL-8000A-SH is the standard model developed with the emphasis on durability. It produces seams with consistency when run at speeds which falls in the range of the highest sewing speeds.



Operation panel and control box are integrated with the machine head



Voice guidance for assisting the operator (newly-developed LCD panel)
This sewing machine is provided as standard with the voice guidance with clock function.

Example of audio guidance
"Oil level is low. Please refuel." "Oil tank is full." "Bobbin thread will be running out."
"Increasing speed" "Thank you for your hard work. Good bye"

Production support function

The target number of products, work progress (current number of products produced, achievement rate) and the operating rate of the sewing machine are displayed on the control panel provided that the initial data have been properly set. These pieces of data that provide an indication for the operator will contribute to enhanced production support.

Since the USB port is provided as standard for the operation panel and control box, sewing data can be managed and the relevant software can be upgraded with ease.

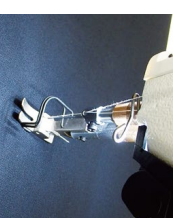
Energy-saving effect

Automatic turning OFF function of the operation panel backlight

The backlight of the operation panel is automatically turned OFF when the operation panel is not operated for a certain period of time. (Setting time: 1 - 20 minutes)

LED hand light

Illuminance of the LED hand light is adjustable in five levels. It can be adjusted to the illuminance to help the operator to easily carry out work around the needle, thereby helping increase work efficiency.



Shorter-thread remaining type

DDL-8000AB

The shorter-thread remaining type model is the high-performance sewing machine provided with the thread clamp device which is used at the beginning of sewing and the shorter-thread remaining function which is used at the end of sewing. With these features, manual thread nipping work is no longer required.

Double blades drive rotary knife type thread trimmer has been adopted. Since this thread trimmer blades intersect with each other just under the needle entry, an appropriate length of needle thread is ensured without being affected by the stitch length and the length of thread remaining on the material is 3.5 mm or less with consistency.



Option Extra-short thread remaining kit: 40201086

By attaching the optional extra-short thread remaining kit to the DDL-8000AB (shorter thread remaining type), the length of thread remaining on the material is reduced to 3.0 mm or less.

* When this kit is used, the specific throat plate (No.40163071) and lead dog (No.40164902) must be separately arranged.